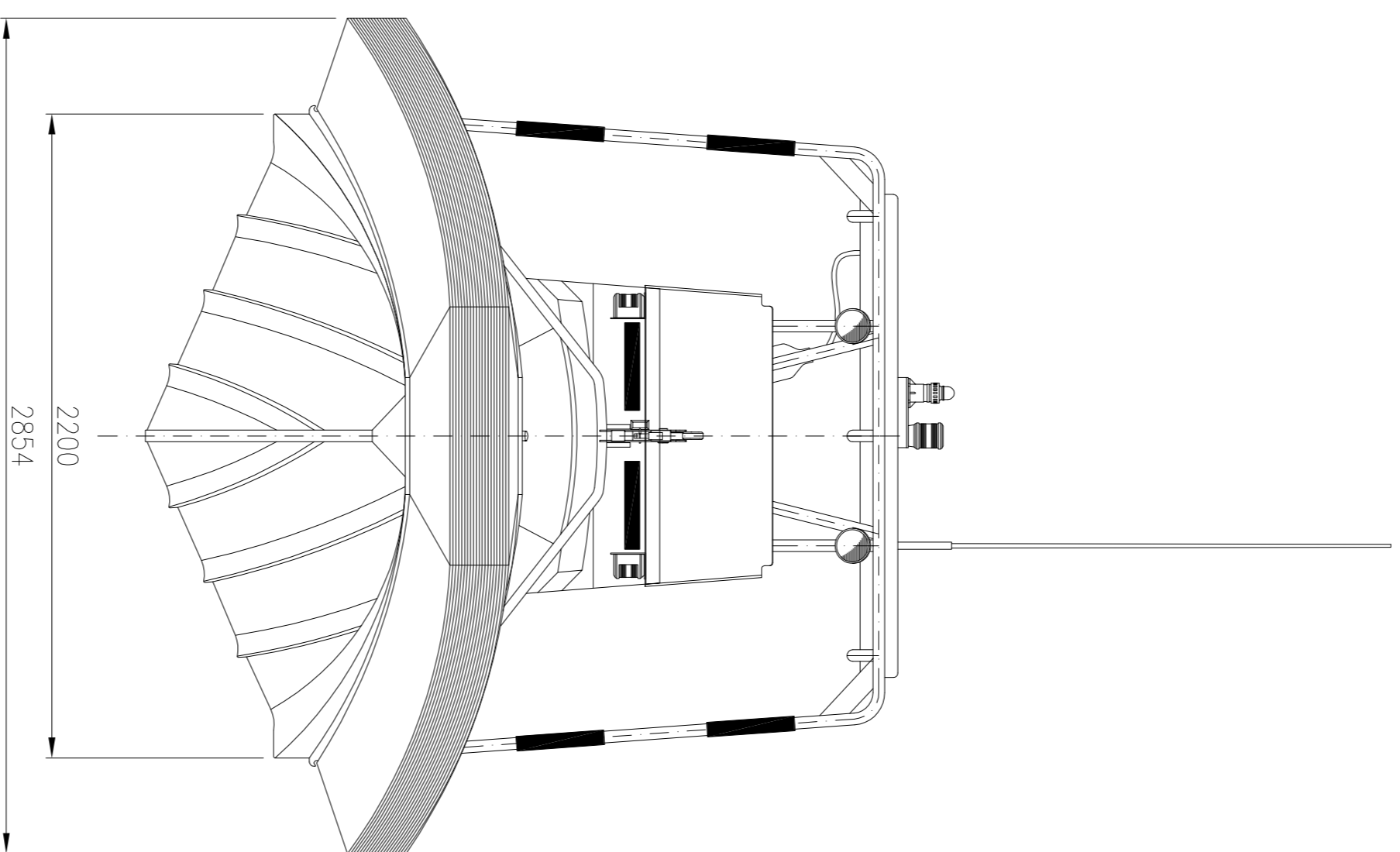
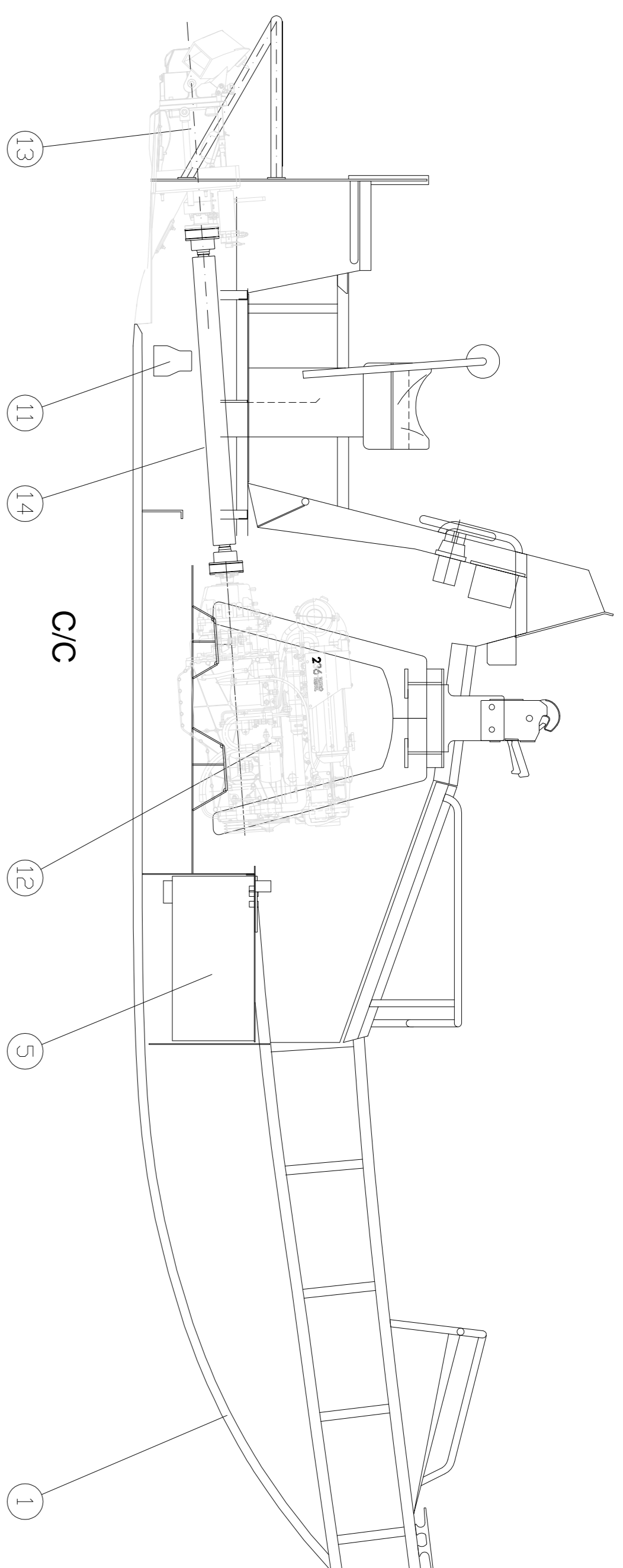
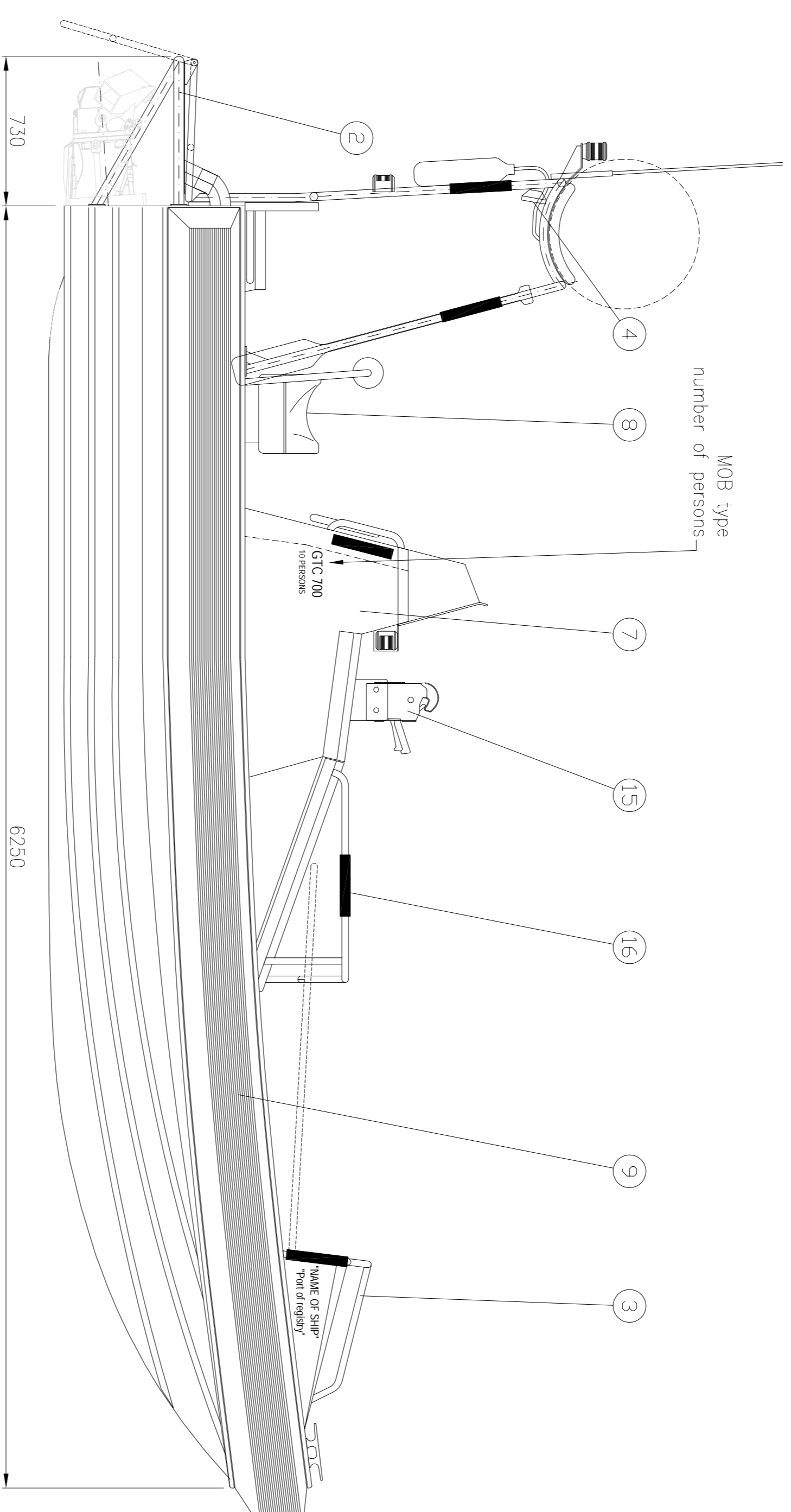


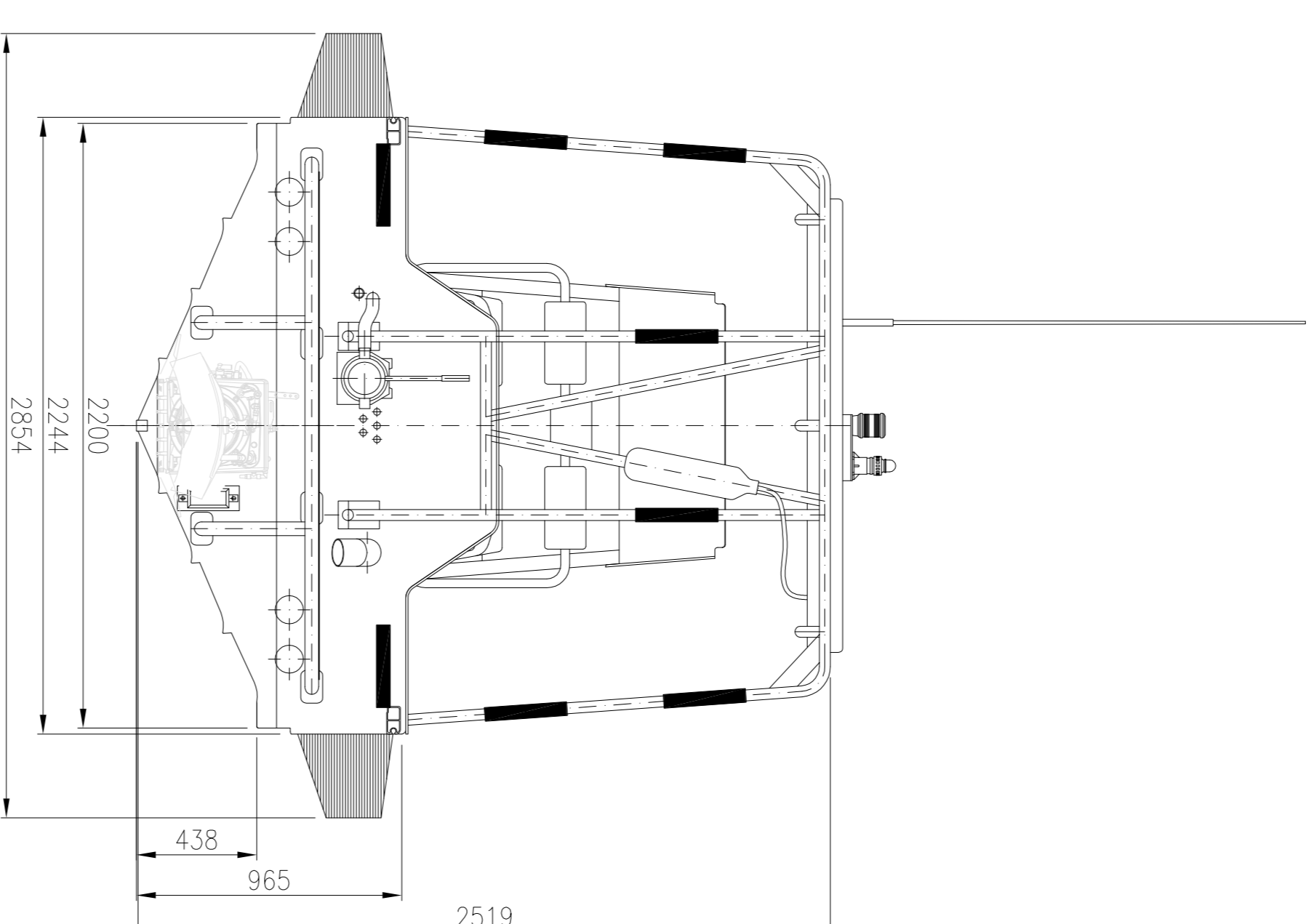
Denne tegning må ikke kopieres uten vår skriftlige tillatelse.
 Tegningen eller dens innhold må ikke overføres en tredje person.
 Ingen stikker eller gjødsels lov.
 This document must not be copied without our written permission.
 The content of this document must not be passed to a third party.
 Contravention will be prosecuted.



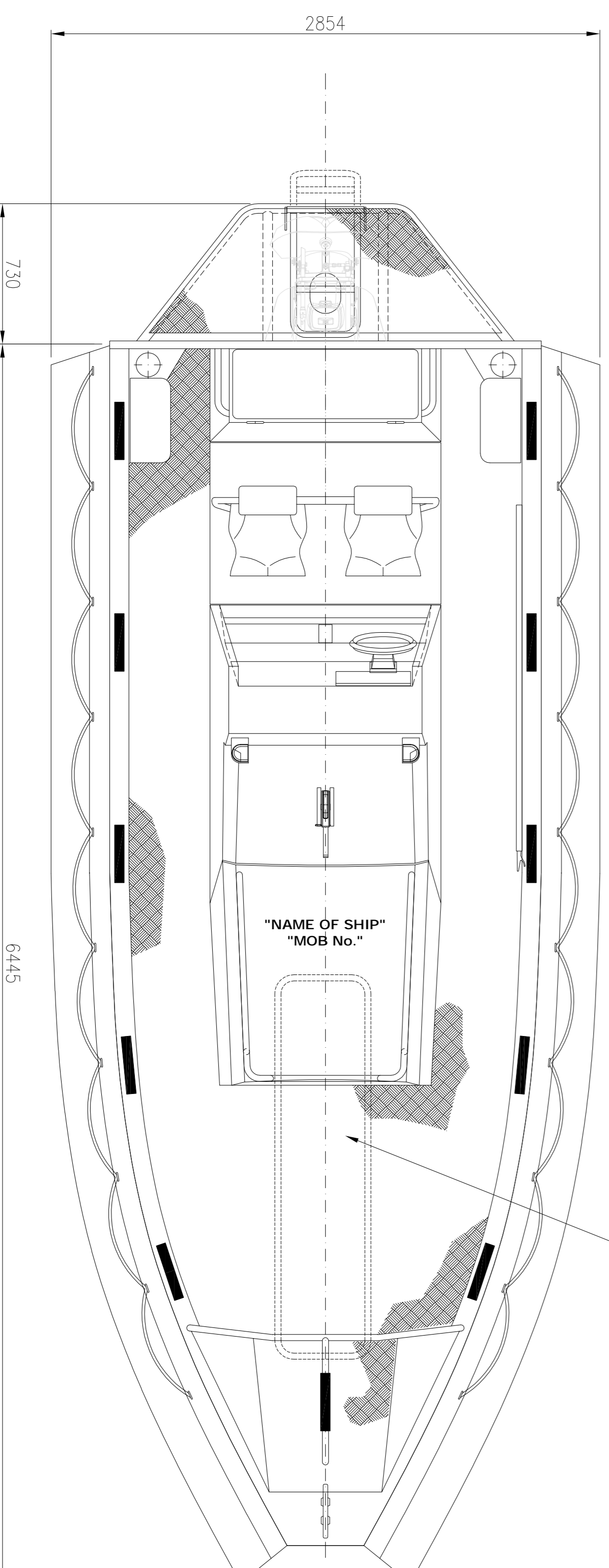
Front view



Side view



Rear view



Top view

RevNo	Revision note	Date	Signature/Checked
A			

16	30	Refleks 5x30	Reflectil	Solas	
15	1	Offload/Release hook	AlSi316		H.Henriksen
14	1	CV shaft			
13	1	Waterjet propulsion			
12	1	Diesel engine			
11	1	Bilge pump system		A1-7914	
9	1	Fendersystem		A1-7912	
8	1	Seating arrangement		A1-7911	
7	1	Steering console		A1-7910	
6	1	Lifting Frame		A1-7909	
5	1	Diesel tank		A1-7908	
4	1	Cap size frame		A1-7907	
3	1	Hull and rear arrangement		A1-7906	
2	1	Hull-Rearframe		A1-7905	
1	1	Hull-Aluminium		M700.GTC	
Item Qty	IdtQty	Description	Material	SHEET 001/002	Weight/Remarks
				Standard	

MARE GTC 700
GENERAL ARRANGEMENT

DATE: 22.01.08
 DRAWN: More
 SCALE: 1:20
 DESIGN: More
 DATE: More
 CUSTOMER:

MARE SAFETY AS
 6067 ULSTEINVIK
 NORWAY
 Telephone: 7009810
 Telex: 7009920
 E-mail: office@mare.no

REV: MARE BR
 DATE:

DRAWING NO.: **M700.GTC.004**
 REFACES DRAW NO.:

